

WALL-MOUNTED GLASS BOARD

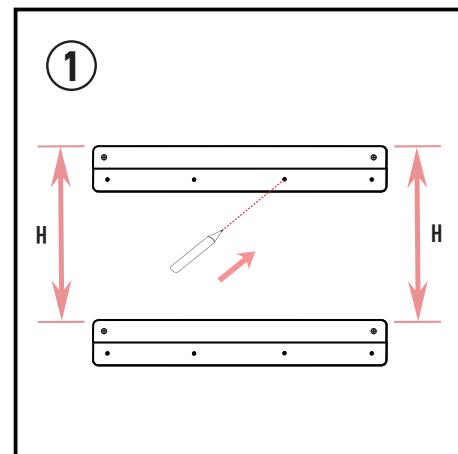
INSTALLATION INSTRUCTIONS

GLASS BOARD SIZE	Z HANGER SPACING H
600X900mm	375mm
900x1200mm	675mm
1000x1000mm	775mm

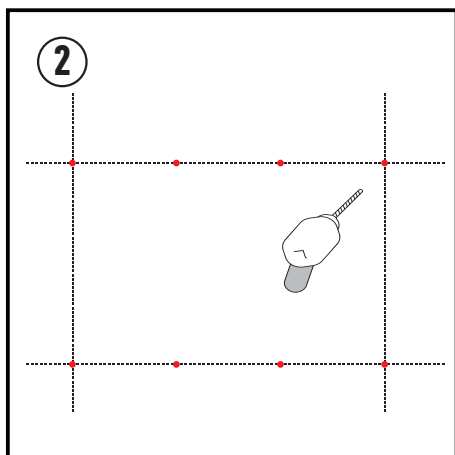
Caution!

Do not allow children under three years old to contact with the small parts inside of the package, avoid swallowing;
 Avoid injury during installation; **Keep the spare parts.**

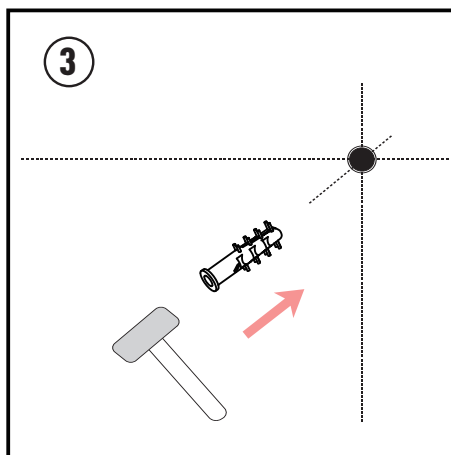
PARTS	SKETCH	NUMBER
GLASS BOARD		1PCS
Z HANGER		2PCS
EXPANSION BOLT		8pcs
TRAY		1PCS
SCREW		8PCS



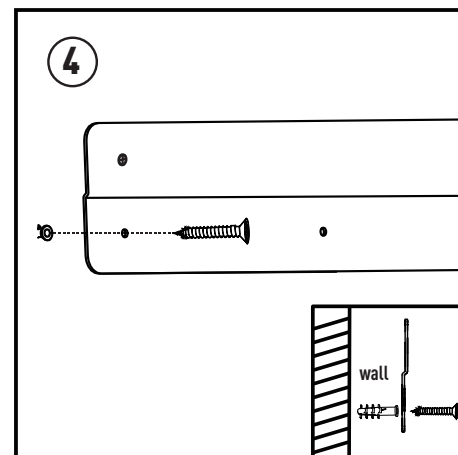
Refer to the table to find the Z hanger spacing H corresponding to the glass board size, place the two Z hangers parallelly to the wall and determine the spacing, then mark the mounting hole position.



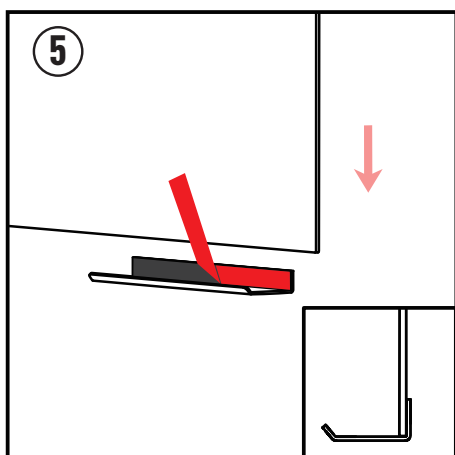
Punch holes in the marks, and the diameter of the holes are about 6mm



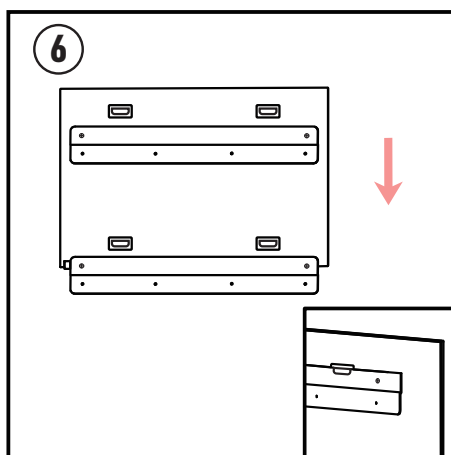
Insert the expansion bolts into the bottom of the hole separately



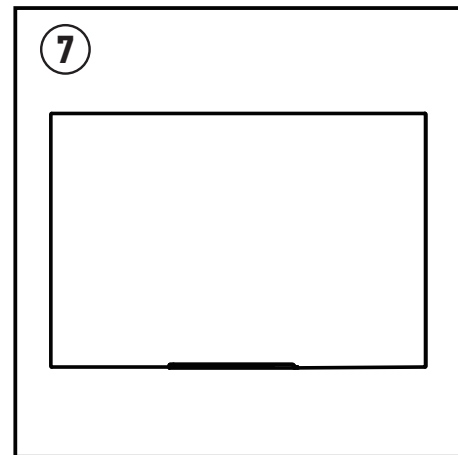
Fix the two Z hangers onto the wall by screws firmly



Remove the 3M tape paper from the marker tray and adhesive it to the back of the glass board



Lift the glass board and hook the slots on the back of the glass board onto the Z hangers you just installed on the wall.



Installation finished. Please enjoy your writing